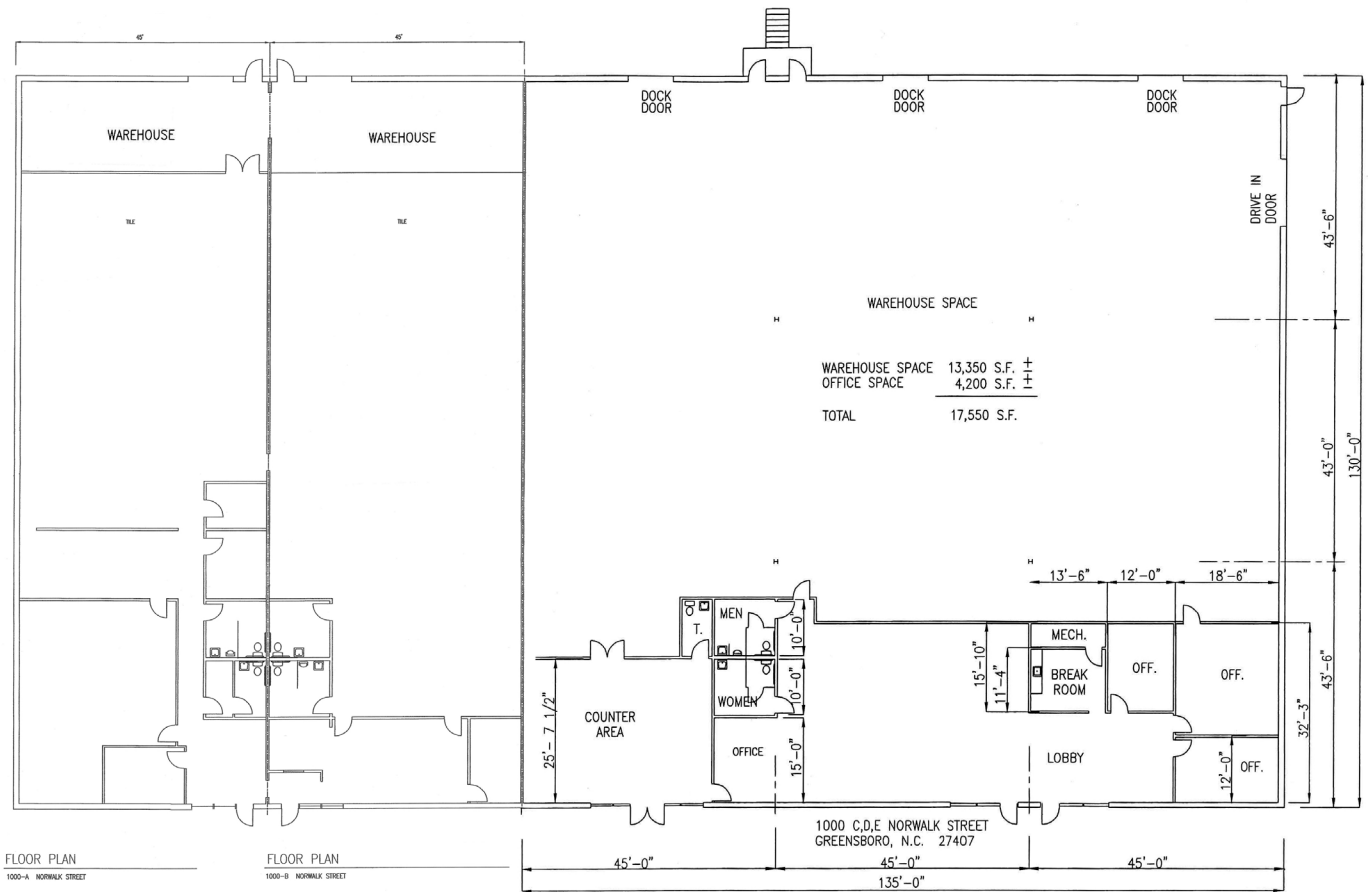


Site Location: 1000 Norwalk Street • Greensboro, NC 27407



1000 A
5,850 sq. ft.
All Finished Area - Air Conditioned and Lay-in Ceiling
Finished Area and Warehouse - Gas Heat
One Dock Door (4')

1000 C, D, E
17,550 sq. ft.
Office/Finished Area - Air Conditioned and Gas Heat
Warehouse - Gas Heat
Three Dock Doors (Each 4')
One Large Drive-in Door

1000 B
5,850 sq. ft.
Entire Space - Air Conditioned and Gas Heat
Warehouse - 18' Clear Ceiling Height to Bar Joist
One Dock Door (4')

Entire Building
29,250 sq. ft.
Office/Warehouse - flexible
1 Large Drive In Door (12'x14')
5 Dock Doors (each 4')

1000 A & B Combined - 11,700 sq. ft.

Features:

Gas Heat Throughout
Air Conditioning in Portions
29,250 Sq. Ft. Building Area
Office Area As Shown
2.2 Acres Land Area
18' Clear Ceiling Height
5" Floor Thickness

Brick & Block Construction
Light Industrial Zoning
5,850 Sq. Ft. Unit Sizes
8 Parking Spaces per Unit
44 Total Parking Spaces
Built in 1996
45'x43' Bay Spacing

FLEX SPACE FOR LEASE

Site Location:

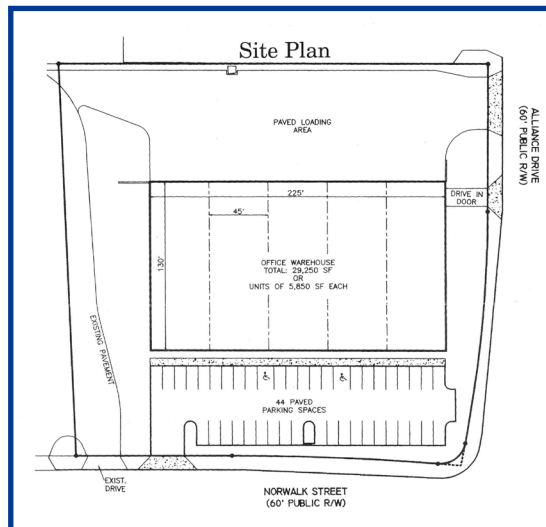
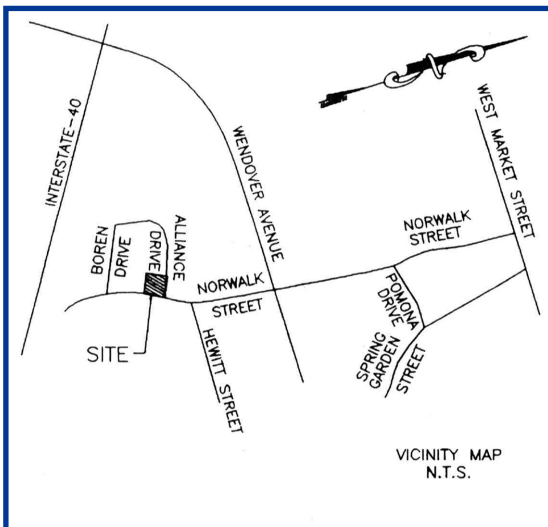
1000 Norwalk Street
Greensboro, NC 27407

Office/Showroom or Office Warehouse



BESSEMER

Jerry W. McCraw, CCIM, CPM®
Bessemer Improvement Company
336.272.8179
PO Box 14220
Greensboro, NC 27415-4220
www.bessemerimprovement.com



Features:

- Gas Heat
- Air Conditioning In Portions
- 29,250 Sq. Ft. Building Area
- Office Area As Shown
- 2.2 Acres Land Area
- 18' Clear Ceiling Height
- 5" Floor Thickness
- Brick & Block Construction
- Light Industrial Zoning
- 5,850 Sq. Ft. Unit Sizes
- 8 Parking Spaces per Unit
- 44 Total Parking Spaces
- Built in 1996
- 45'x43' Bay Spacing