

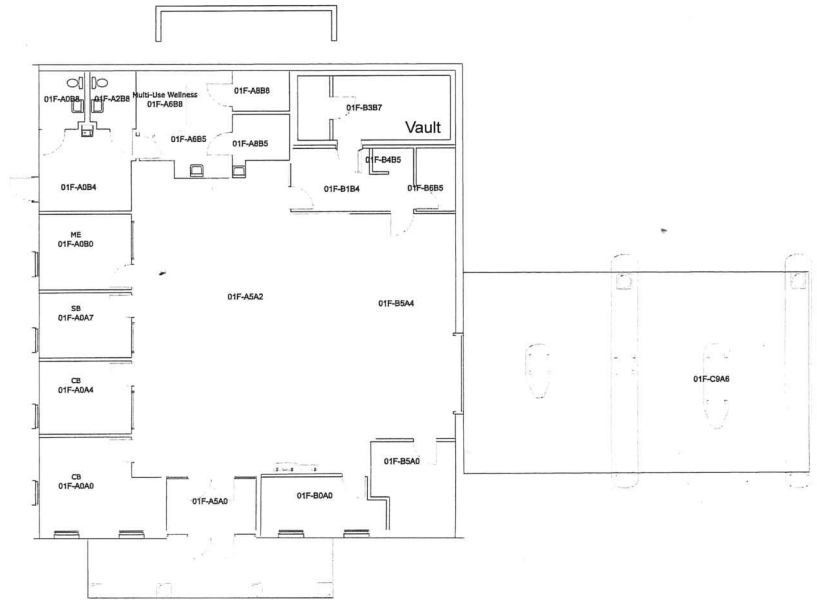
WINSTON-SALEM, NORTH CAROLINA

PRIME RETAIL BUILDING FOR LEASE

698 Hanes Mall Boulevard • Winston-Salem, NC 27103

Features

- Building Area: Approx 3,639 Sq. Ft. per survey
- Zoning: GB
- Land Area: .96 Acres per survey
- Construction: Walk in vault in place
- Parking: 44 Parking Spaces
Drive through capability



BESSEMER IMPROVEMENT COMPANY
 Jerry McCraw
 812 North Elm Street • Greensboro, NC 27401
 336-272-8179 • www.bessemerimprovement.com